



短期留学報告

アテネ工科大学(ギリシャ)

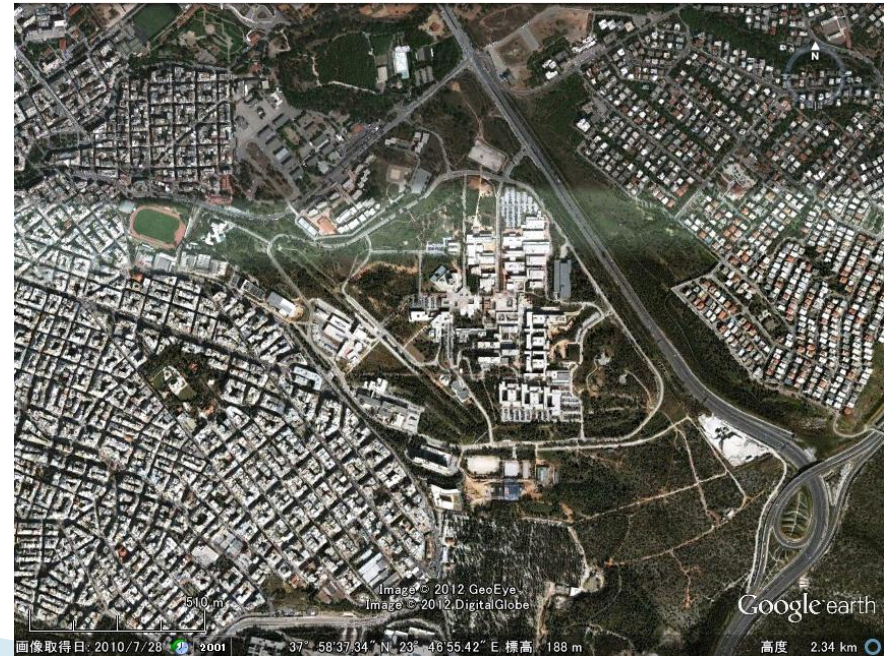
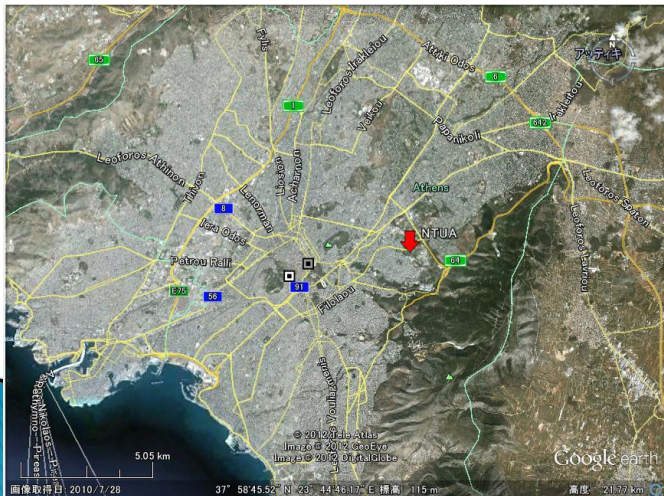


2012/2/18~3/20 (移動日含む)

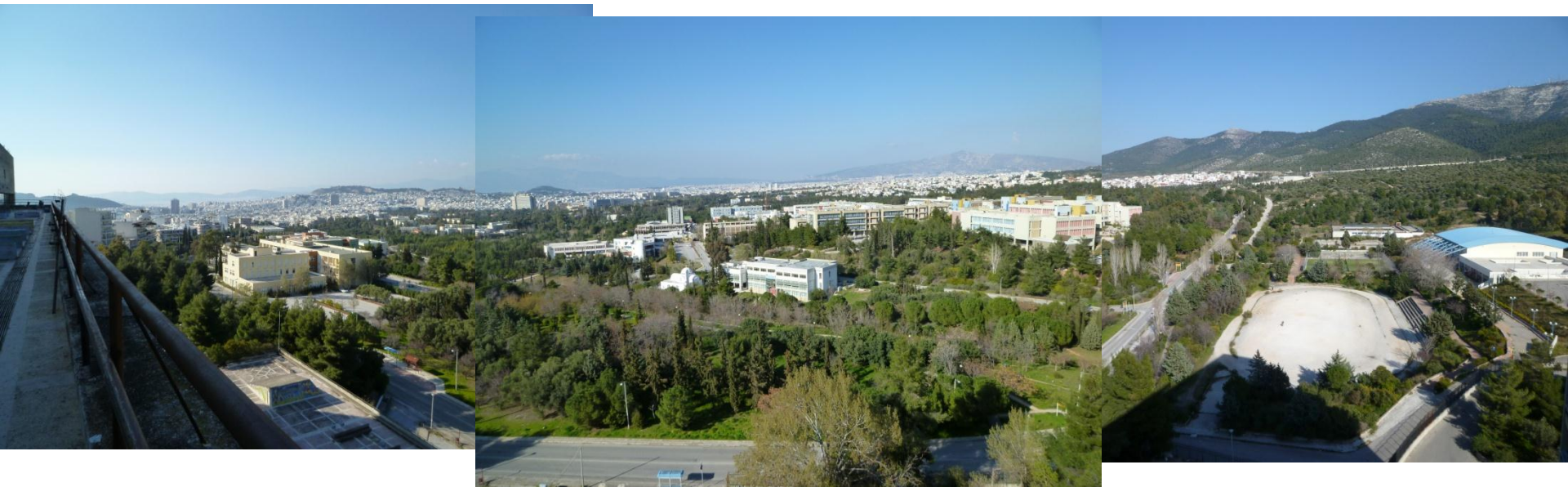
411M404 小柳津 菜都美

ギリシャ

- ▶ 人口:約1130万人(アテネ周辺:340万人)
- ▶ 国土面積:約13万2千 km²(約6000の島を含む)
- ▶ 言語:ギリシャ語、英語
- ▶ 時差:-7時間
- ▶ 通貨:ユーロ(1€=約110円)



アテネ工科大学 全景



アテネ工科大学

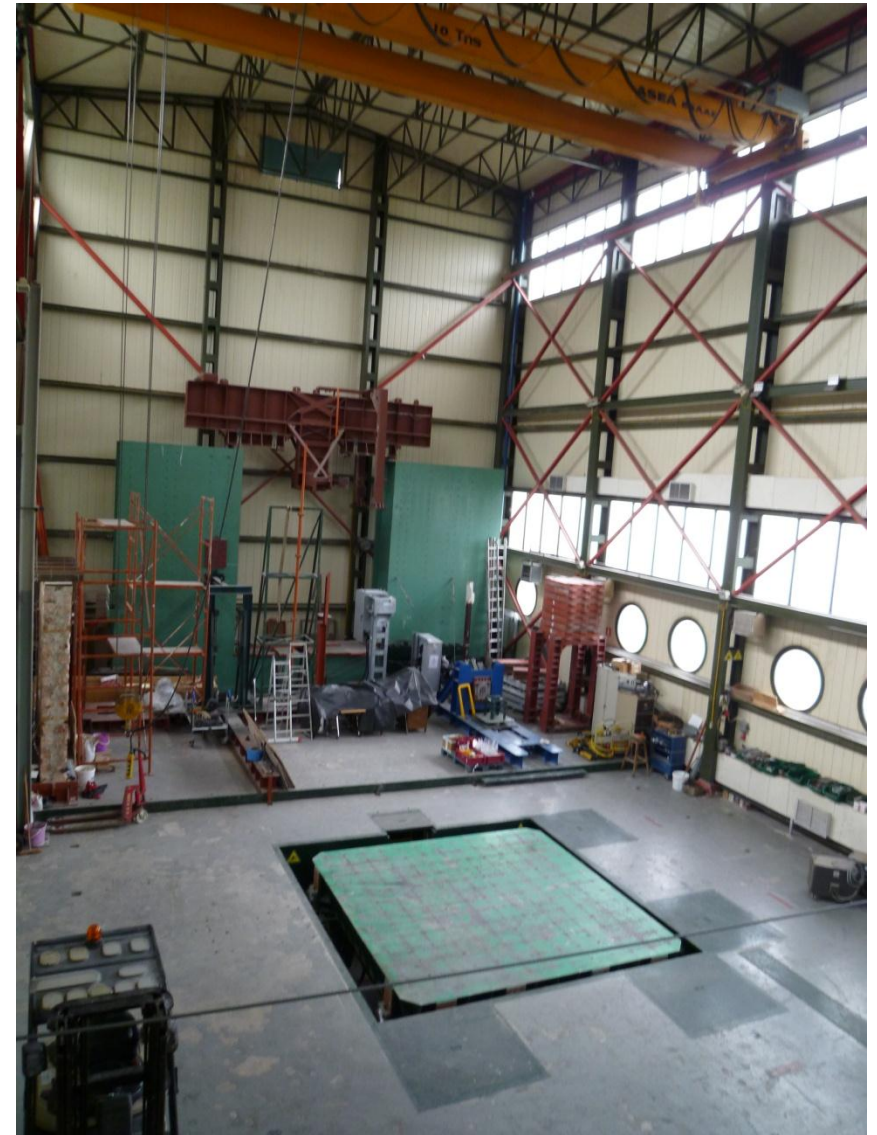
National Technical University of Athens

- ▶ School of Mechanical Engineering
- ▶ School of Electrical and Computer Engineering
- ▶ School of Architecture
- ▶ School of Chemical Engineering
- ▶ School of Rural and Surveying Engineering
- ▶ School of Mining Engineering and Metallurgy
- ▶ School of Naval Architecture and Mathematical and Physical Science
- ▶ School of Civil Engineering
 - Structural Engineering
 - **Laboratory for Earthquake Engineering**
 - Water Resources, Hydraulic and Maritime Engineering
 - Geotechnical Engineering
 - Transportation Planning
 - Engineering Construction and Management

domitory



Laboratory



Lecture

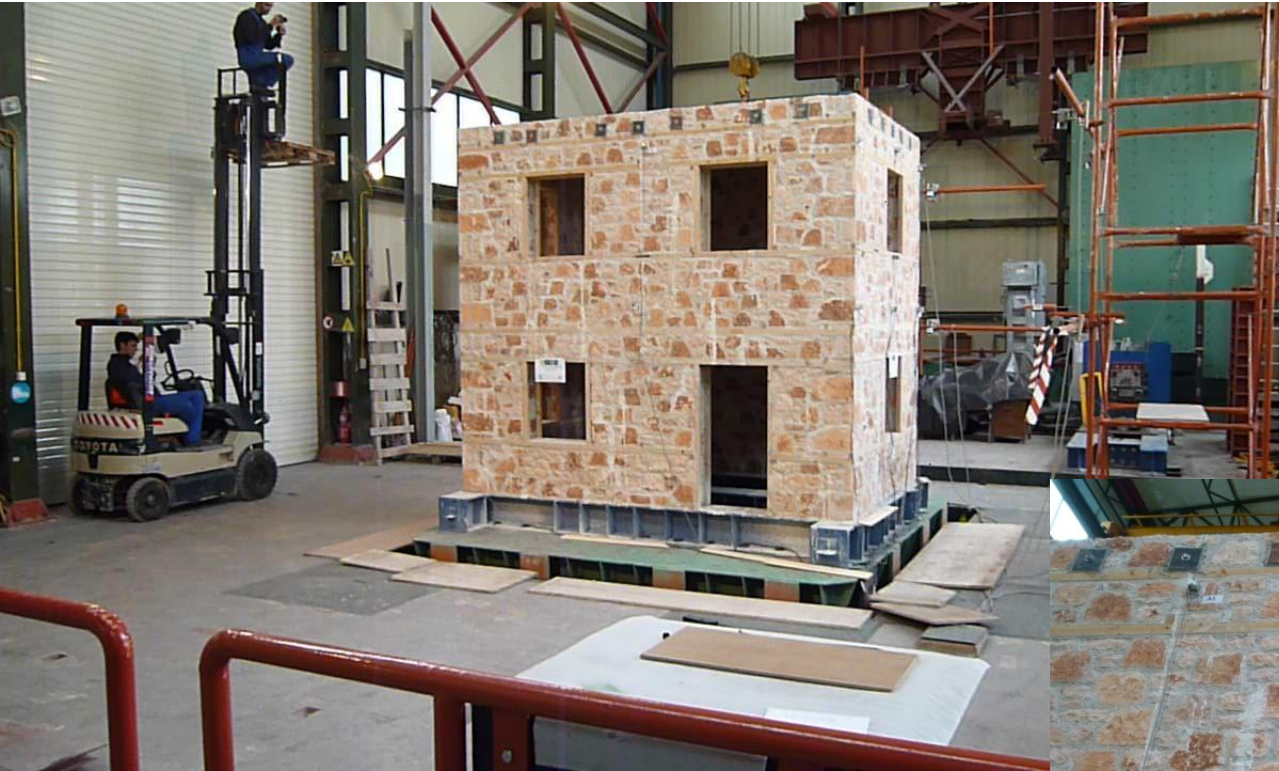
Experimental Earthquake Engineering



Dafni Monastery



Shaking table test



Extra ~Halkis~



~ Karambaka & Meteora ~



~ Architecture ~

